



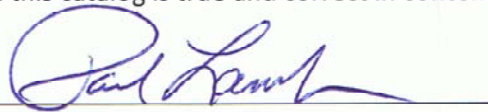
## 2009 – 2010 Student Information Bulletin

MQY Wings of Eagles  
276 Doug Warpoole Drive  
Smyrna, TN 37167  
615 355-0033  
[www.wingsmqy.com](http://www.wingsmqy.com)

JWN Wings of Eagles  
210 Tune Airport Drive  
Nashville, TN 37209  
615 425-2067  
[www.jwnwings.com](http://www.jwnwings.com)

Volume 1a, Published 11/6/2009

All information in this catalog is true and correct in content and policy.

A handwritten signature in blue ink, appearing to read "Paul Lamb", is written over a horizontal line.

Paul Lamb, Director  
Wings of Eagles LLC

# Table of Contents

ABOUT WINGS OF EAGLES LLC .....	1
FACILITIES.....	2
MQY Wings of Eagles .....	2
JWN Wings of Eagles.....	3
AIRCRAFT.....	3
FLIGHT TRAINING DEVICES .....	4
HOURS OF OPERATION .....	5
ORGANIZATION.....	5
WINGS OF EAGLES FACULTY .....	6
ACADEMIC POLICIES.....	8
CONDUCT OF TRAINING.....	8
ENROLLMENT POLICY .....	8
MEDICAL CERTIFICATION .....	8
ENROLLMENT DATES .....	8
CREDIT FOR PREVIOUS TRAINING.....	9
Transfers to Wings of Eagles LLC .....	9
Transfers to Other Schools .....	9
ACADEMIC STATUS .....	9
ATTENDANCE .....	10
GRADING POLICY.....	10
Ground Instruction.....	10
Flight Training .....	11
RECORDS .....	11
TERMINATIONS AND STANDARDS OF CONDUCT .....	11
GRIEVANCES.....	12
COMPLIANCE WITH EQUAL OPPORTUNITY LAWS.....	12
JOB PLACEMENT .....	12
SPECIAL PROVISIONS FOR VA BENEFICIARIES.....	13
Enrollment .....	13

Pilot and Medical Certification .....	13
Credit for Previous Training .....	13
Attendance.....	13
Grading Policy .....	14
Terminations and Standards of Conduct .....	14
FINANCIAL POLICIES.....	15
TUITION AND FEES .....	15
REFUNDS .....	15
SPECIAL PROVISIONS FOR VA BENEFICIARIES.....	16
Tuition and Fees.....	16
Application for VA Benefits.....	16
Refund of VA Benefits.....	17
Suspension of VA Benefits .....	17
TRAINING COURSE DESCRIPTIONS.....	18
GRADUATION AND COURSE COMPLETION .....	19
SPECIAL PROVISIONS FOR VA BENEFICIARIES.....	19
INSTRUMENT RATING COURSE – AIRPLANE .....	20
ENROLLMENT .....	20
SPECIAL ENROLLMENT REQUIREMENTS FOR VA BENEFICIARIES .....	20
CURRICULUM .....	20
COURSE SUMMARY.....	20
Ground Instruction.....	20
Flight Training .....	21
FLIGHT TIME SUMMARY .....	21
COMPLETION STANDARDS.....	22
COMMERCIAL PILOT CERTIFICATION TRAINING COURSE.....	23
ENROLLMENT .....	23
SPECIAL ENROLLMENT REQUIREMENTS FOR VA BENEFICIARIES .....	23
CURRICULUM .....	23
COURSE SUMMARY.....	24
Ground Instruction.....	24

Flight Training .....	24
FLIGHT TIME SUMMARY .....	24
COURSE COMPLETION STANDARDS .....	25
FLIGHT INSTRUCTOR CERTIFICATION COURSE .....	26
ENROLLMENT .....	26
SPECIAL ENROLLMENT REQUIREMENTS FOR VA BENEFICIARIES .....	26
CURRICULUM .....	26
COURSE SUMMARY.....	26
Ground Stage Descriptions .....	26
Flight Stage Descriptions.....	27
FLIGHT TIME SUMMARY .....	27
COURSE COMPLETION STANDARDS .....	28
FLIGHT INSTRUCTOR INSTRUMENT CERTIFICATION COURSE .....	29
ENROLLMENT .....	29
SPECIAL ENROLLMENT REQUIREMENTS FOR VA BENEFICIARIES .....	29
CURRICULUM .....	29
COURSE SUMMARY.....	29
Ground Stage Descriptions .....	29
Flight Stage Descriptions.....	30
FLIGHT TIME SUMMARY .....	30
COURSE COMPLETION STANDARDS .....	31
AIRLINE TRANSPORT PILOT CERTIFICATION .....	32
ENROLLMENT .....	32
SPECIAL ENROLLMENT REQUIREMENTS FOR VA BENEFICIARIES .....	32
CURRICULUM .....	32
COURSE SUMMARY.....	33
Ground Stage Descriptions .....	33
Flight Stage Descriptions.....	33
FLIGHT TIME SUMMARY .....	33
COURSE COMPLETION STANDARDS .....	34
TRAINING COURSES COST ADDENDUM.....	35

GENERAL .....	35
COST ESTIMATES.....	35
TUITION AND FEES .....	35
REFUNDS .....	35
AUTHORIZED AIRCRAFT AND HOURLY RATES .....	36
SPECIAL FINANCIAL INFORMATION FOR VA BENEFICIARIES .....	36
INSTRUMENT RATING – AIRPLANE COURSE .....	38
Information for VA Beneficiaries .....	38
COMMERCIAL PILOT CERTIFICATION COURSE.....	39
Information for VA Beneficiaries .....	39
FLIGHT INSTRUCTOR CERTIFICATION COURSE .....	40
Information for VA Beneficiaries .....	40
FLIGHT INSTRUCTOR INSTRUMENT CERTIFICATION COURSE .....	41
Information for VA Beneficiaries .....	41
AIRLINE TRANSPORT PILOT CERTIFICATION COURSE .....	42
Information for VA Beneficiaries .....	42

# About Wings of Eagles LLC

This catalog is effective on 11/6/2009 for the 2010 calendar year.

Designed for use during the period stated above, this catalog gives a general description of Wings of Eagles LLC and provides detailed information regarding the training courses offered by the school. The provisions of the catalog do not constitute a contract between the student and Wings of Eagles LLC.

The management of Wings of Eagles LLC reserves the right to change, without prior notice, any provision, offering, or requirement in the catalog. This includes the right to adjust fees, as necessary. The School further reserves the right at all times to require a student to withdraw for cause.

Wings of Eagles LLC is a special purpose institution established for the purpose of training pilots in accordance with current Federal Aviation Administration regulations. This purpose does not include preparing the student for further college study.

**THEC Required Statement** “Wings of Eagles LLC is authorized by the Tennessee Higher Education Commission. This authorization must be renewed each year and is based on an evaluation of compliance with minimum standards concerning quality of education, ethical business practices, health and safety, and fiscal responsibility.”

Wings of Eagles LLC is approved by the Federal Aviation Administration (FAA) to conduct ground and flight training for all pilot certificates and ratings under Part 61 and to conduct ground and flight instruction for the following training courses under Part 141 of the Federal Aviation Regulations (FARs):

- Private Pilot Certification – Airplane Single-Engine Land
- Instrument Rating – Airplane
- Commercial Pilot Certification – Airplane Single-Engine
- Flight Instructor Certification – Airplane Single-Engine
- Flight Instructor Instrument Certification – Airplane Single-Engine
- Airline Transport Pilot Certification – Single-Engine Land

Each training course in the Wings of Eagles LLC curriculum leads to a new level of pilot certification or an additional rating to a current pilot certificate. You may enter the curriculum at any level depending upon the certificates and ratings you hold.

Wings of Eagles LLC is a certified Cirrus Standardized Training Center and Diamond Flight Center.

## **FACILITIES**

Wings of Eagles LLC operates two training centers located in Nashville and Smyrna, TN. Each training center is fully equipped with the training resources, such as aircraft and flight training devices, necessary to conduct each training lesson on site. In addition to the training resources positioned at each training center, Wings of Eagles students have access to the training resources available at the other center. Refer to the current *Training Courses Cost Addendum*, located later in this Bulletin, for a list of resources assigned to each training center.

Normally, your training will be conducted at the training center of your selection with an instructor based at that training location. From time to time, you and your instructor may elect to travel to the other training center to utilize a specific resource to accomplish a particular training objective.

### **MQY Wings of Eagles**

The main operations base of Wings of Eagles LLC for all training courses is located at the Smyrna-Rutherford County Airport (MQY), approximately 19 miles SE of downtown Nashville in Smyrna, Tennessee. The airport has two hard-surfaced runways and is served by multiple instrument approach procedures. The airport meets the requirements of FAR 141.38 for day and night flight operations.

The flight school occupies office space in the Corporate Flight Management fixed base operation (FBO) for a management office and public discussion area. The school has access to the FBO lobby, pilot briefing room, pilot lounge, conference room, vending area, restrooms, and a pilot shop that provides a selection of aviation charts and supplies, as well as ramp space immediately outside the FBO hangar for parking of school aircraft.

The flight school and FBO offer wired and wireless high-speed internet access and telephones for your use to access aviation weather and flight planning services including DUATS. The flight school also is in close proximity to available classroom and meeting space owned by the Smyrna-Rutherford County Airport Authority.

MQY Wings of Eagles also has access to Howell Enterprises' classroom building located on the Smyrna Airport at 661 Fitzhugh Boulevard, which consists of a classroom, simulator room, pilot lounge, break room, computer room, offices and restrooms, all of which are heated and air-conditioned. The classroom is 24x44 feet and contains eight work tables capable of accommodating up to 18 students. The classroom is illuminated through overhead fluorescent lighting as well as with individual variable-intensity incandescent work table lamps. Instruction is supported through a laptop computer, an LCD projector with remote control and two permanently installed projector screens, a dry erasable marker board, two VHS-format VCRs, and a 16" color television. The classroom also stores a library of videotape and DVD training materials, and an assortment of airframe and engine training aids.

Corporate Flight Management provides fuel and maintenance services at MQY for many of the Wings of Eagles aircraft and is an authorized Cirrus Service Center.

## **JWN Wings of Eagles**

Wings of Eagles LLC maintains a satellite training location for all training courses at the John C Tune Airport (JWN), located about six miles WNW of downtown Nashville. The airport has one hard-surfaced runway and is served by multiple instrument approach procedures. The airport meets the requirements of FAR 141.38 for day and night flight operations.

Use areas located in Hangar 1 include an office, classroom, reception area, and break area, all heated and air-conditioned. The main classroom is 11x20 feet and can support the training of six students in three cubicles. Instruction is supported with dry erase boards, a 16" TV/VCR/DVD player, and an assortment of videotape, DVD materials, and flight planning charts.

All rooms are illuminated through overhead fluorescent lighting. Access to public restrooms is provided through the hangar to the ramp side office area on the west side of the building.

The flight school has access to the Corporate Flight Management fixed base operation (FBO) lobby, pilot briefing room, pilot lounge, conference room, vending area, restrooms, and pilot shop. The school has available ramp space immediately outside of Hangar 1 for parking of school aircraft, as well as space in public and private hangars in various locations on the airport.

The flight school and FBO offer wired and wireless high-speed public internet access and telephones for your use to access aviation weather and flight planning services including DUATS.

Corporate Flight Management provides fuel services at JWN. Many of the Wings of Eagles aircraft receive maintenance services from Cumberland Avionics, located in Hangar 1.

## **AIRCRAFT**

Wings of Eagles LLC's training and rental fleet consists of aircraft models manufactured by Cirrus, Cessna, Diamond, Piper and Raytheon Beechcraft. Many of the flight school's aircraft are late-model, technologically-advanced aircraft featuring state-of-the-art navigation technology and all-glass cockpits.

Wings of Eagles LLC's aircraft are maintained by independent aviation maintenance organizations staffed by licensed aircraft mechanics. These companies perform a full array of services, including periodic airframe and powerplant inspections, routine scheduled maintenance, repairs, and major airframe and powerplant service and repair. All Wings of Eagles aircraft meet the requirements of FAR 141.39, and are maintained and inspected in accordance with the requirements under Subpart E of FAR 91 that apply to aircraft operated for hire.

The composition of the Wings of Eagles training fleet changes periodically. A listing of available aircraft models is described in the current *Training Courses Costs Addendum* to this Bulletin.

Depending on the particular training objective to be accomplished, students may have access to aircraft located at either training center.

## FLIGHT TRAINING DEVICES

In addition to our diverse training aircraft fleet, Wings of Eagles also offers flight training devices (FTDs) that give you a safe, flexible, and cost-effective training alternative. These devices will improve your knowledge and understanding of the various flight procedures. In addition to knowledge enhancement, the introduction of maneuvers and procedures by instrument reference in FTDs has the advantages of fewer distractions, more versatility in lesson presentation, flight repositioning and freeze functions, emergencies training, and the ability to control the environment of the training session to allow you to concentrate on the areas of learning the instructor wants to emphasize.

The Smyrna training location offers a Fidelity Motus 6-Series full-motion FTD, which simulates a realistic flight environment in six axes of motion at a small fraction of the cost of flying in actual aircraft. Fidelity's multi-screen external display offers a 140° wraparound field of view. The comprehensive graphical instructor's station provides full control of flight parameters, environment, weather and system malfunctions, making the flight training device as suited to visual training as it is for instrument training. The Motus 6 Series FTD is certified as a Level III flight training device and meets the requirements of FAR 141.41(a).

The Motus 6 Series FTD can be configured as the following aircraft:

- Beechcraft Baron 58
- BeechJet
- Bonanza F33A
- Cessna 172
- Cessna 421
- Diamond DA40
- Jetstream 31
- King Air 200
- Piper Seneca V
- Mitsubishi MU2B-60

At the John Tune training location, an Elite PI-135 flight training device provides a safe training environment that is conducive to learning, practicing, and understanding instrument procedures. The Elite PI-135 platform is a powerful training tool that helps you practice your instrument thinking skills, visualize procedures, develop situational awareness, and master your instrument scan technique before getting in the aircraft. Equipped with the training experience from the Elite FTD, you can then take to the air better prepared to perform what you have learned.

Some Wings of Eagles training courses permit the use of FTDs in substitution for aircraft flight time. Use of FTDs, where permitted by the training course curricula, is detailed in each of the training course descriptions in this catalog.

The Motus 6 Series and Elite PI-135 FTDs offer different simulation capabilities. Depending on the particular training objective to be accomplished, students may have access to the FTD located at either training center.

## HOURS OF OPERATION

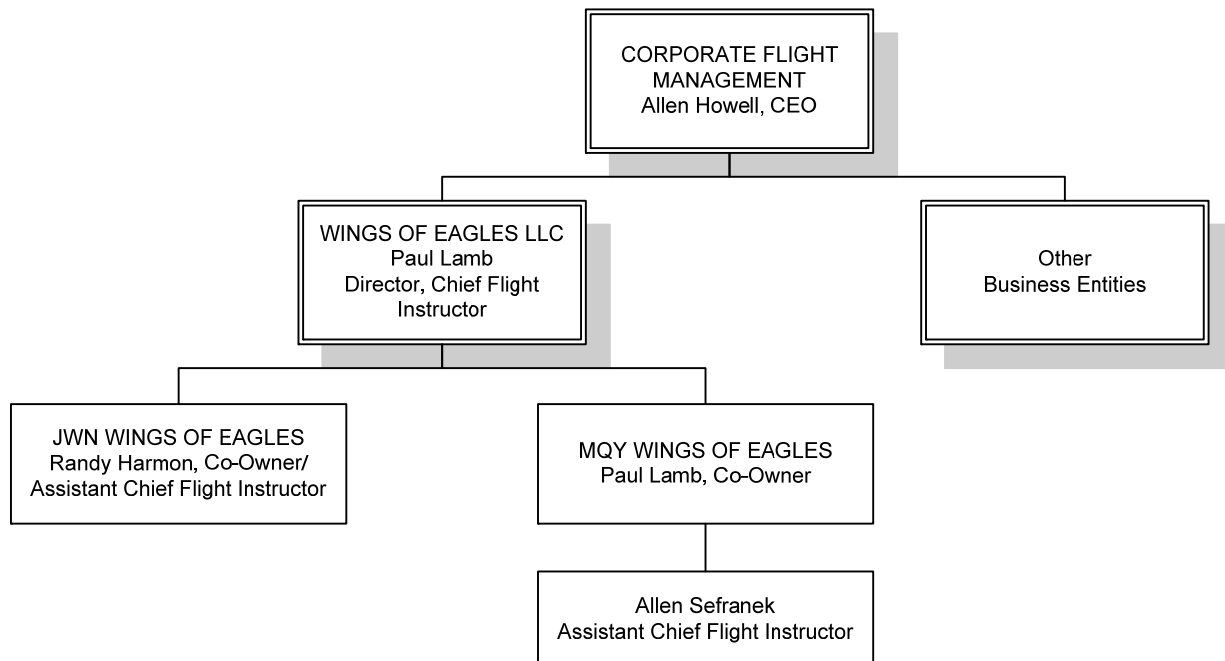
Because ground instruction and flight training are scheduled at the mutual agreement between you and your flight instructor, training may be scheduled seven days per week, 365 days per year. The Wings of Eagles LLC office operates between 8am – 5pm, Mondays through Fridays, except holidays. Wings of Eagles observes holidays on New Year’s Day, Easter, Memorial Day, July 4th, Labor Day, Thanksgiving, and Christmas. Airplanes may be dispatched through the Corporate Flight Management line service counters at JWN and MQY, which are open 24 hours per day, 365 days per year, or through Wings of Eagles’ online scheduling system.

Wings of Eagles and Corporate Flight Management supervisory staff and emergency contacts are available 24 hours per day, 365 days per year.

## ORGANIZATION

Wings of Eagles LLC is a partly-owned subsidiary of Corporate Flight Management (CFM), a global aviation resources firm based in Smyrna, Tennessee. CFM was founded in 1981 and provides charter, aircraft management, maintenance, ground support, infrastructure development, aircraft sales, pilot training, and financial services.

Wings of Eagles LLC does business as JWN Wings of Eagles and MQY Wings of Eagles. The following chart describes the ownership and organizational relationships of the involved corporate entities.



# Wings of Eagles Faculty

**ALLEN HOWELL, President/CEO, Corporate Flight Management**

**PAUL LAMB, Managing Partner/Chief Flight Instructor**

MAJ USA (Ret). BS – Education, University of Tennessee, Knoxville, TN.

Commercial Pilot. CFI – Airplane, Instrument, Multiengine. Cirrus Standardized Instructor.

Master Flight Instructor. Gold Seal Flight Instructor.

Aviation Mechanic – Airframe, Powerplant.

FAAST Safety Representative.

**RANDY HARMON, Managing Partner/Assistant Chief Flight Instructor (JWN)**

LTC USAF (Ret). MA – Education, Chapman University, Orange, CA.

Commercial Pilot. CFI – Airplane, Instrument. Cirrus Standardized Instructor.

**ALLEN SEFRANEK, Assistant Chief Flight Instructor (MQY)**

BS – Aerospace, MTSU, Murfreesboro, TN.

Commercial Pilot. CFI – Airplane, Instrument.

**TIM BARBUTES, Certificated Flight Instructor**

Commercial Pilot. CFI – Airplane, Instrument.

**LARRY BOYERS, Certificated Flight Instructor**

BS – Aerospace, Embry Riddle University, Prescott, AZ.

Airline Transport Pilot. CFI – Airplane, Instrument, Multiengine.

**CHRIS CARNETT, Certificated Flight Instructor**

BS – Aerospace, MS – Aerospace Education, MTSU, Murfreesboro, TN.

Commercial Pilot. CFI – Airplane, Instrument, Multiengine.

**QUINCY DAVIS, Certificated Flight Instructor**

BS – Aerospace, MTSU, Murfreesboro, TN.

Commercial Pilot. CFI – Airplane, Instrument, Multiengine.

**CHARLES DAYHUFF, Certificated Flight Instructor**

Commercial Pilot. CFI – Airplane, Instrument, Multiengine.

**STEVE JOHNSON, Certificated Flight Instructor**

Commercial Pilot. CFI – Airplane.

**JOSHUA MOTOHASHI, Certificated Flight Instructor**

Commercial Pilot. CFI – Airplane, Instrument. Cirrus Standardized Instructor.  
Georgia AngelFlight Volunteer Pilot of the Year 2005.

**SKIP MUNN, Certificated Flight Instructor**

BS – Aerospace Science, Metropolitan State College of Denver, CO.  
Airline Transport Pilot. CFI – Airplane, Instrument, Multiengine. Cirrus Standardized Instructor.  
Ground Instructor – Instrument.  
FAAST Safety Representative.

**JUD PHILLIPS, Certificated Flight Instructor**

Airline Transport Pilot. CFI – Airplane, Instrument, Multiengine. Cirrus Standardized Instructor.  
Ground Instructor – Instrument.

**MARK ROBEY, Certificated Flight Instructor**

Commercial Pilot. CFI – Airplane, Instrument, Multiengine.

**ROBERT SAWYER, Certificated Flight Instructor**

BS – Aerospace, MTSU, Murfreesboro, TN.  
Commercial Pilot. CFI – Airplane, Instrument. Cirrus Standardized Instructor.

## Academic Policies

The following admissions policies apply to all students enrolling in Wings of Eagles LLC training courses. Additional special provisions may apply for those students utilizing VA educational benefits, and are detailed in the *Special Provisions for VA Beneficiaries* section later in this chapter.

### CONDUCT OF TRAINING

All training will be conducted in accordance with FAR 141, the current *Wings of Eagles Safety Practices and Procedures Manual*, and current FAA-approved Training Course Outlines.

### ENROLLMENT POLICY

In order to enroll in any course of instruction, you must be able to read, write, speak, and understand the English language. Additional enrollment requirements may exist for specific training courses and are identified in each training course description.

You must positively establish identification, citizenship, and age eligibility as specified in FAR 61 and in the appropriate appendix in FAR 141 for the course in which you are enrolling.

You must provide proof of citizenship prior to enrolling in any training course. Non-US citizens must receive approval from the Transportation Security Administration as provided in 49 CFR 1552.3 prior to beginning flight training.

Special enrollment requirements may exist for VA beneficiaries. Refer to the *Special Provisions for VA Beneficiaries* section later in this chapter for more information.

### MEDICAL CERTIFICATION

Federal Aviation Regulations require applicants hold certain FAA pilot certificates and ratings prior to enrollment in training courses. Minimum certificate and rating requirements for each training course are listed in the specific course description.

Special pilot and medical certification requirements may exist for VA beneficiaries. Refer to the *Special Provisions for VA Beneficiaries* section later in this chapter for more information.

### ENROLLMENT DATES

You may enroll in any Wings of Eagles training course on any day of the year the school is in operation and may start training that same day.

## CREDIT FOR PREVIOUS TRAINING

### Transfers to Wings of Eagles LLC

The transfer of credit for previous training is always the sole responsibility of the receiving institution. The previous provider of the training must certify the kind and amount of training given, and the result of each stage check and end-of-course test, if applicable.

In accordance with FAR 141, when a student transfers from another FAA-approved school and enrolls in a course of training at Wings of Eagles LLC, course credits obtained in the previous course of training may be credited for up to 50% of the curriculum requirements at Wings of Eagles. Wings of Eagles LLC may determine the amount of credit to be allowed based upon a proficiency test or knowledge test, or both, conducted by Wings of Eagles.

A student who transfers from a non-FAR 141 flight school and enrolls in a course of training at Wings of Eagles LLC may receive credit for up to 25% of the curriculum requirements at Wings of Eagles for knowledge and experience gained in the previous course of training. The amount of credit awarded may be based upon a review of training records or other transcripts, proficiency test, knowledge test, or combination thereof, conducted by Wings of Eagles LLC.

Additional procedures for evaluating credit for previous training may exist for VA beneficiaries. Refer to the *Special Provisions for VA Beneficiaries* section later in this chapter for more information.

### Transfers to Other Schools

Students who transfer from Wings of Eagles LLC to other flight schools may receive credit for training received at Wings of Eagles. The amount of credit that may be transferred is granted at the discretion of the receiving school in accordance with FAR 141.77(c). Authorization by the Tennessee Higher Education Commission does not guarantee transferability of credit for courses earned at Wings of Eagles LLC.

A copy of the student's training record will be furnished upon receipt of a written request from the receiving school.

## ACADEMIC STATUS

An **active** student is an individual who is currently enrolled in an approved FAR 141 training course.

A **probationary** student is an individual enrolled in an approved FAR 141 training course who has failed an original stage flight check, and who is receiving remedial flight and ground instruction in preparation for a retake of the failed stage flight check.

An **inactive** student is an individual who has not participated in ground or flight instruction activity for 90 days or more.

A **dismissed** student is an inactive student who has not participated in ground or flight instruction activity for 120 days or more and who may be removed from the school's computerized scheduling system for administrative reasons.

A **terminated** student is an individual whose course of instruction has been involuntarily terminated due to misconduct, failure to make adequate instructional progress in an enrolled training course, failure to meet attendance requirements, or for other cause.

A **graduated** student is an individual who has satisfactorily met the graduation requirements of a Wings of Eagles approved FAR 141 training course, and who has successfully passed the FAA practical test and received the appropriate training course graduation certificate.

## **ATTENDANCE**

Regular attendance is important to your rate of progression through a training course and, therefore, directly influences the overall cost of your training program. Because ground instruction and flight training are scheduled through mutual agreement between you and your flight instructor, training may be scheduled seven days per week, 365 days per year. A schedule of two to three periods of instruction per week is ideal for many students, although more or fewer instructional periods may be scheduled to meet your schedule and finances.

If you take a leave of absence, you should expect to require additional refresher training at additional cost upon re-enrollment to re-establish the level of proficiency attained at the time of the interruption of training. The amount and nature of remedial training required will be determined by your flight instructor.

Additional attendance requirements may exist for VA beneficiaries. Refer to the *Special Provisions for VA Beneficiaries* section later in this chapter for more information.

## **GRADING POLICY**

The following grading system for flight training and ground instruction applies to all students enrolled in approved FAR 141 training courses at Wings of Eagles LLC.

Additional grading policies may exist for VA beneficiaries. Refer to the *Special Provisions for VA Beneficiaries* section later in this chapter for more information.

## **Ground Instruction**

Your progress in the ground instruction portion of a training course is measured by lesson tests, intermediate stage exams, and end-of-course exams as prescribed by your training syllabus. A score of 80% is required to pass all lesson tests, stage exams, and end-of-course exams. At the completion of the ground instruction portion of most training courses, you will be required to take the appropriate FAA Airman's Knowledge Test. The FAA knowledge test is the final evaluation of your knowledge for the ground instruction portion of the training course. A score of 70% is required to pass the FAA written exam.

If your training is interrupted, you should expect to require additional refresher training upon re-enrollment to re-establish the level of proficiency attained at the time of the interruption of training. The amount and nature of remedial training required will be determined by your flight instructor.

### **Flight Training**

Your flight instructor will grade each individual task or maneuver practiced during a flight lesson and each overall flight lesson, and record the grade in your progress record. Tasks and maneuvers will be graded as either Satisfactory (S) or Unsatisfactory (U). Each overall flight lesson will be graded by the flight instructor according to the following scale:

- 1 – Excellent (95 – 100%)
- 2 – Above Average (85 – 94%)
- 3 – Satisfactory (75 – 84%)
- 4 – Below Average (70 – 74%)
- 5 – Unsatisfactory (< 70%)

### **RECORDS**

Wings of Eagles training records of students enrolled in approved FAR 141 training courses are maintained in accordance with FAR141.101(d).

Your training record consists of a folder or electronic record appropriate to your enrolled training course that shows the dates of training, the number of hours of ground instruction and flight training, the maneuvers covered, and the instructor's grading and comments concerning your performance during the lesson.

Individual instructors are responsible for initiating and maintaining training records on all active students. Student training folders of all active students are maintained at the base of operations where the student primarily receives training.

Records of all graduated, dismissed, or terminated students are retained for at least one year after the date that you graduate from a course, terminate your enrollment in a course, or transfer to another school.

A copy of your progress records will be provided to you upon written request.

### **TERMINATIONS AND STANDARDS OF CONDUCT**

You are expected to adhere to all Wings of Eagles LLC safety practices and procedures. A copy of the current *Safety Practices and Procedures Manual* will be provided to you at the time of your initial enrollment.

If you are found to be continuously or knowingly in violation of Wings of Eagles safety practices and procedures, at the discretion of Chief Flight Instructor, you may be given verbal or written warning, or your training may be discontinued and you may be terminated from the school.

If you are terminated for inappropriate conduct, you may make a written request for reinstatement to the Chief Flight Instructor. You may be reinstated after evidence is shown that the conditions that caused the interruption for inappropriate conduct have been rectified. In the event of an interruption to your training, you should expect to require additional refresher training upon re-enrollment to re-establish the level of proficiency attained at the time of the interruption. The amount and nature of remedial training required will be determined by your flight instructor.

Additional policies regarding terminations and standards of conduct may exist for VA beneficiaries. Refer to the *Special Provisions for VA Beneficiaries* section later in this chapter for more information.

## **GRIEVANCES**

If you have a dispute or grievance over a training or administrative issue, you first should attempt to resolve the matter with the affected party. If you are unable to resolve the issue, you should escalate the matter to the Assistant Chief Flight Instructor of the training location. If you are still unable to resolve the dispute, you should contact the Chief Flight Instructor. Grievances may be discussed in person, by phone, or by e-mail.

**THEC Required Statement** “If a complaint is not settled at the institutional level, the student may contact the Tennessee Higher Education Commission, Nashville, TN 37243-0830, (615) 741-5293.”

## **COMPLIANCE WITH EQUAL OPPORTUNITY LAWS**

Wings of Eagles LLC is an equal opportunity institution. In compliance with federal laws and regulations, Wings of Eagles LLC does not discriminate on the basis of race, color, gender, creed, national and ethnic origin, age, or disability in any of its policies, procedures, or practices. Wings of Eagles LLC does not discriminate in the recruitment and admission of students, in the recruitment and employment of instructors and staff, or in the operation of any programs and activities.

## **JOB PLACEMENT**

Wings of Eagles LLC does not provide job placement assistance nor makes any representation or guarantee of the future employability of students.

## **SPECIAL PROVISIONS FOR VA BENEFICIARIES**

In addition to the policies described earlier, which apply to all students enrolled in approved FAR 141 training courses offered by Wings of Eagles LLC, the following additional policies are required by VA regulations for those students utilizing VA educational benefits.

Wings of Eagles FAR 141 training courses are authorized by the Tennessee Higher Education Commission (State Approving Agency) for enrollment of persons eligible to receive education benefits from the Department of Veterans Affairs (VA). Admission policies for veterans and other eligible persons are the same as those for other students.

### **Enrollment**

In order to be eligible for VA training benefits, VA beneficiaries must be enrolled in an approved FAR 141 training program. Restrictions prescribed by VA regulations may exist regarding the order in which courses may be taken and concurrent enrollment in multiple courses. Where such restrictions exist, they are detailed in the appropriate training course description.

### **Pilot and Medical Certification**

VA regulations require a VA beneficiary hold certain FAA pilot and medical certificates prior to enrollment in training courses in order to receive benefits for training. These requirements may be more restrictive for VA beneficiaries than those prescribed by the FAA for other FAR 141 students. Minimum pilot and medical certificate requirements for each training course are listed in the specific course description.

### **Credit for Previous Training**

VA regulations require that an analysis of prior training must be performed for the purpose of payment of VA benefits. The Chief Flight Instructor will evaluate any previous training and, where appropriate, grant credit and shorten proportionately the training course in which you are enrolling in accordance with the provisions of FAR 141.

You will be notified of any credit awarded towards your enrolled training course. Any credit granted will be indicated on the Enrollment Certification (VA Form 22-1999).

A written record of any previous training will be maintained in your training file.

### **Attendance**

VA beneficiaries receiving federal assistance benefits under Title 38 USC are required by VA to complete a minimum number of hours of ground or flight instruction per quarter. The 90-day quarter begins on the date of your first ground or flight instruction. Exceptions may be granted due to weather, illness, or other mitigating circumstances, but must be documented in your training record. Minimum quarterly training hours requirements for each training course are listed in the respective course description. VA beneficiaries who fail to meet the quarterly

attendance minimums will be terminated for the purpose of VA payment effective on the last day of the quarter.

### **Grading Policy**

VA requires that a school enforces standards of progress for VA beneficiaries.

A VA beneficiary who fails to maintain a minimum grade of 80% for two consecutive ground instruction stage exams will be terminated for unsatisfactory progress for VA benefits. No benefits can be paid, nor can you be certified for any training necessary to complete the failed training course.

A VA beneficiary who fails a flight training stage check will be placed on probationary enrollment status. You will be entitled to credit for those tasks and maneuvers that were passed during the original stage check. However, you must satisfactorily accomplish any additional training specified by the Wings of Eagles check airman and pass the remainder of the stage check within the 15-day period after the original stage check. A VA beneficiary who fails a second stage check will be terminated for unsatisfactory progress for VA benefits. No benefits can be paid, nor can you be certified, for any training necessary to complete the failed training course.

### **Terminations and Standards of Conduct**

VA regulations require that violation of Wings of Eagles LLC standards of conduct by VA beneficiaries is cause for termination for purposes of VA payment.

## Financial Policies

The following financial policies apply to all students enrolled in Wings of Eagles LLC training courses. Additional special provisions may apply for those students utilizing VA educational benefits, and are detailed in the *Special Provisions for VA Beneficiaries* section later in this chapter.

### TUITION AND FEES

Wings of Eagles' commitment to you.. our students and customers.. is to provide the highest quality training and aircraft rental possible, combined with the very best possible customer service at the very best prices and hourly rates. We do not add fuel surcharges or any other hidden charges, although local sales tax may be added to non-instructional aircraft rentals.

Fees are based on the hourly usage of aircraft, simulators, and instructors. A current rate sheet for Wings of Eagles LLC resources will be provided at the time of enrollment. Cost estimates for each of the Wings of Eagles training courses are described in the current *Training Costs Addendum* to this catalog.

**Fees for ground instruction and flight training are billed as they are incurred and payment is required at the time services are rendered. Normally, no advance payment is expected or required. Payment may be made by cash, check, or credit card.**

**Should you desire to provide funds to Wings of Eagles LLC for training in advance of that training, those funds will be held on deposit in your name at Wings of Eagles LLC. Accounts are billed as ground and flight lessons are completed.**

Total program costs vary with aircraft utilized for training, your previous flight experience, frequency of flight training, study habits, and your rate of progression through a course. **Actual training costs will vary from student to student.**

Books and supplies used in ground instruction and flight training may be purchased directly from Corporate Flight Management or from any commercial vendor.

### REFUNDS

**No refund of fees paid for the hourly usage of aircraft, simulators, and instructors will be made once those services have been rendered.**

**However, if you have deposited funds with Wings of Eagles LLC for training in advance of that training and you terminate training at any time and for any reason while unused funds remain on deposit, you shall receive a refund of 100% of those funds remaining at the time of termination. There are no program or administrative fees, penalties, or early termination fees.**

## **SPECIAL PROVISIONS FOR VA BENEFICIARIES**

### **Tuition and Fees**

The policies regarding fees charged to VA beneficiaries are the same for all students of Wings of Eagles LLC and are described in the *Tuition and Fees* section above.

**Fees for ground instruction and flight training are billed as they are incurred and payment is required at the time services are rendered. Normally, no advance payment is expected or required. Payment may be made by cash, check, or credit card.**

VA reimbursements for allowed training expenses are made monthly and paid directly to beneficiaries following the delivery of those services and periodic submission of documentation in accordance with VA regulations of the delivery of those services by Wings of Eagles LLC. Consequently, a delay of 60-90 days or more between delivery of training and receipt by the beneficiary of reimbursements from VA should be expected. Wings of Eagles LLC does not receive payment of reimbursements from VA.

### **Application for VA Benefits**

VA will reimburse an eligible veteran, service member, or reservist for dual and solo flight training, preflight briefings, postflight critiques, and ground instruction at a maximum rate of 60%. The allowance is paid to you monthly based upon actual training certified by the flight school as indicated on VA Form 22-6653c, Monthly Certification of Flight Training.

You must complete an application to furnish the data necessary to determine your eligibility for educational assistance benefits for particular educational objectives. Applications and required forms vary according to the type of benefits and your individual circumstances. Forms may be downloaded from the VA Web site or you may apply online using the VONAPP Veterans Online Application at <http://www.gibill.va.gov>.

When you apply on-line, your application will be sent directly to the VA Regional Office with jurisdiction over your application. Processing will begin right away, and you will receive a response from the VA office informing you of the status of your application.

A certificate of eligibility will be mailed to you once VA has received the application for benefits and all necessary supporting documents.

You are responsible for notifying the certifying official at Wings of Eagles LLC of any change in your enrollment or change in personal information affecting your eligibility. You also must remain in compliance with VA requirements during your training. You may receive education benefits only for courses that are required for your professional or vocational development.

In accordance with VA regulations, no VA benefits are payable for pursuit of a private pilot certificate and no benefits may be paid for any training given prior to the issuance of your private pilot certificate.

## **Refund of VA Benefits**

The policies regarding refunds made to VA beneficiaries are the same for all students of Wings of Eagles LLC and are described in the *Refunds* section earlier.

VA reimbursements for allowed training expenses are made directly to beneficiaries only following the delivery of those services and periodic submission of documentation in accordance with VA regulations of the delivery of those services by Wings of Eagles LLC. Wings of Eagles LLC does not receive payment of reimbursements from VA.

**No refund of fees paid for the hourly usage of aircraft, simulators, and instructors will be made once those services have been rendered.**

**However, if you have deposited funds with Wings of Eagles LLC for training in advance of that training and you terminate training at any time and for any reason while unused funds remain on deposit, you shall receive a refund of 100% of those funds remaining at the time of termination. There are no program fees, penalties, or early termination fees.**

## **Suspension of VA Benefits**

VA regulations require that education assistance to veterans and other eligible persons be discontinued when:

- You cease to make satisfactory progress toward completion of the training objective
- You fail to meet minimum quarterly attendance requirements.
- You withdraw or terminate enrollment from a training course prior to completion
- You are terminated for cause

Accordingly, benefits will be interrupted if your enrollment is subject to discontinuance. No benefits can be paid, nor can you be certified, for any training necessary to complete the incomplete training course. VA will be appropriately notified of the reasons for your discontinuance.

You may be re-enrolled and recertified for VA benefits only after submitting a written request to VA to reinstate benefits, showing evidence to the Wings of Eagles Chief Flight Instructor that the conditions relating to the unsatisfactory progress or performance have been rectified, and that there is a reasonable likelihood that your future performance will be satisfactory. In the event of discontinuance for unsatisfactory performance through your training curriculum, the request must include proof of academic counseling and the conditions of continued enrollment or re-entrance. VA will determine eligibility for reinstatement of benefits based, in part, on the recommendation of the Wings of Eagles Chief Flight Instructor. In the event of an interruption to your training, you should expect to require additional refresher training upon re-enrollment to re-establish the level of proficiency attained at the time of the interruption. The amount and nature of remedial training required will be determined by your flight instructor.

## Training Course Descriptions

The following FAR 141 approved training courses are offered by Wings of Eagles LLC:

- Private Pilot – Airplane Single-Engine Land
- Instrument Rating – Airplane
- Commercial Pilot Certification – Airplane Single-Engine
- Flight Instructor Certification – Airplane Single-Engine
- Flight Instructor Instrument Certification – Airplane
- Airline Transport Pilot Certification – Airplane Single-Engine Land

Enrollment restrictions may exist for VA beneficiaries. Refer to the *Special Provisions for VA Beneficiaries* section later in this chapter for more information.

Most Wings of Eagles LLC training courses are based upon the Jeppesen Guided Flight Discovery Pilot Training System. These courses are based upon the latest FAA pilot certification requirements of FAR 141, and provide a maximum of student-oriented instruction by combining ground-based multi-media instruction with flight training in modern, technologically advanced aircraft and flight simulators.

Each training course contains separate ground instruction and flight training lessons that are designed to be taught concurrently. Both the ground instruction and flight training portions are divided into stages that organize the training through a carefully designed step-by-step progression of subject introduction and practice, incorporating academic assignments and the training aircraft.

Lesson tests at the conclusion of key lessons, intermediate stage tests administered at the end of each stage of ground instruction, and end-of-course written examinations will measure the student's understanding of the aeronautical knowledge required for the enrolled training course. A score of 80% is required to pass all lesson, stage, and end-of-course exams. At the completion of the ground school portion of each training course, you will be prepared to take the appropriate FAA Airman's Knowledge Test. A score of 70% is required to pass the FAA written exam.

Wings of Eagles training courses also incorporate stage and end-of-course flight checks in accordance with the appropriate appendices of FAR 141. Stage and end-of-course flight checks are given by the Chief Flight Instructor or designee. This process provides close supervision of training and a second opinion on your progress and performance. The stage checks also give the Chief Flight Instructor an opportunity to check the effectiveness of the instructors and their teaching methods.

In the event of your unsatisfactory performance during a flight check, the check airman will debrief your instructor on the areas of deficiency. A recheck or additional ground instruction or flight training may be scheduled if required. In any event, you will be expected to bring the

area of performance in question up to standard within fifteen days of the original stage check. While reasonable latitude is allowed in the number of flight hours required to achieve a specified level of proficiency, repeated failure by a student to improve performance is grounds for termination from the school.

A complete copy of each FAA approved Training Course Outline is available on request. Jeppesen Guided Flight Discovery training course syllabi may be purchased directly from Jeppesen or from many commercial sources.

## **GRADUATION AND COURSE COMPLETION**

You must complete, or receive credit for, all of the ground and flight lessons in the appropriate syllabus to graduate from an enrolled training course. When you complete the syllabus and meet the minimum requirements of FAR 141, you will be considered eligible for graduation and will be issued a graduation certificate for the enrolled training course. Upon graduation, you may apply to take the FAA practical examination from an independent FAA-designated pilot examiner.

Your satisfactory completion of a course consists of successfully passing the FAA practical test and receiving the appropriate pilot certificate or rating.

## **SPECIAL PROVISIONS FOR VA BENEFICIARIES**

VA beneficiaries may enroll only in the following FAR 141 approved training courses offered by Wings of Eagles LLC:

- Instrument Rating – Airplane
- Commercial Pilot Certification – Airplane Single-Engine
- Flight Instructor Certification – Airplane Single-Engine
- Flight Instructor Instrument Certification – Airplane
- Airline Transport Pilot Certification – Airplane Single-Engine Land

VA regulations require a VA beneficiary hold certain FAA pilot and medical certificates prior to enrollment in training courses in order to receive benefits for training. Restrictions also exist regarding the order in which courses may be taken and concurrent enrollment in multiple courses. These requirements may be more restrictive for VA beneficiaries than those prescribed by the FAA for other FAR 141 students. Minimum requirements regarding enrollment, pilot and medical certification, and attendance standards for each training course, where applicable, are listed in the specific course description.

# Instrument Rating Course – Airplane

This course is an advanced training course intended to provide you with the ground instruction and flight training required to obtain the knowledge, skill, and aeronautical experience necessary to meet the requirements for issuance of an initial FAA Instrument Rating – Airplane to your pilot certificate.

## ENROLLMENT

You must hold at least a private pilot certificate with an airplane category and single-engine land class rating prior to enrolling in the flight portion of the Instrument Rating – Airplane course.

## SPECIAL ENROLLMENT REQUIREMENTS FOR VA BENEFICIARIES

VA regulations require that in order to receive benefits for the Instrument Rating – Airplane training course, a VA beneficiary must hold an FAA private pilot certificate and have a current medical certificate valid for second class privileges **prior to enrollment** in this course.

VA beneficiaries pursuing an instrument rating must be concurrently enrolled in the Commercial Pilot Certification course or already possess a commercial pilot certificate.

VA beneficiaries enrolled in the Instrument Rating – Airplane training course and receiving federal assistance benefits under Title 38 USC are required by VA to complete a minimum of eighteen hours of ground instruction, pre- and post-flight briefings, or flight training per quarter to continue to be certified for VA benefits.

## CURRICULUM

The complete *Jeppesen Instrument/Commercial Syllabus* combines instruction for the instrument airplane rating and commercial pilot certificate.

The Instrument Rating – Airplane course is presented first in the *Jeppesen Instrument/Commercial Syllabus* and follows the curriculum outlined in Appendix C of FAR 141. The course consists of a minimum of 30 hours of ground instruction and 35 hours of flight training.

Fewer hours of ground and flight instruction may be required if you are enrolling in this course for the purpose of adding an additional instrument rating to your pilot certificate.

## COURSE SUMMARY

### Ground Instruction

The ground instruction curriculum is divided into three stages and contains a total of 27 ground lessons.

During Stage 1 of the ground instruction, you will learn the principles of instrument flight, including the operation, use, and limitations of flight instruments and instrument navigation systems. You also will learn how the air traffic control system functions and the use of instrument flight charts for IFR planning and flight. Emphasis will be placed on advanced human factors and physiological factors directly related to instrument flight. In addition, you will become familiar with the Federal Aviation Regulations applicable to instrument flight operations.

The ground instruction in Stage 2 will teach you the procedures used to execute the various IFR approaches as well as the procedures for IFR departure, enroute, and arrival operations.

In Stage 3, the ground instruction will prepare you to analyze weather information, conditions, and trends while on the ground and in flight. Additionally, you will learn IFR flight planning and emergency procedures and develop a greater understanding of the aeronautical decision-making process.

At the completion of ground instruction, you will take the actual FAA Instrument Rating – Airplane Airman Knowledge Test.

### **Flight Training**

The flight training curriculum also is divided into three stages and contains a total of 29 flight lessons.

The emphasis of Stage 1 flight training is on IFR flight operations. You will learn precise airplane attitude control by reference to cockpit instruments. Also, you will gain greater competence in the use of navigations systems for IFR flight.

The flight training in Stage 2 will introduce and train you on holding patterns and instrument approaches, including circling and missed approaches. You will learn to correctly perform holding patterns and accurate instrument approaches using full- and partial-panel techniques.

The objective of flight training in Stage 3 is to introduce you to IFR cross-country procedures, increase your flight proficiency to the level required of an instrument-rated pilot, and prepare you for the FAA Instrument Rating – Airplane checkride.

### **FLIGHT TIME SUMMARY**

Times shown on the flight time summary are for guidance only in achieving compliance with the FAA minimums specified in FAR 141. Ultimately, you must show compliance with the minimum requirements of FAR 141 by meeting the minimum experience requirements and demonstrating satisfactory aeronautical knowledge and flight proficiency through stage checks and end-of-course tests.

All flight training in the Instrument Rating – Airplane training course is dual instruction.

**Wings of Eagles Jeppesen Guided Flight Discovery  
Instrument Rating Course - Airplane**

<b>STAGE</b>	<b>GROUND INSTRUCTION</b>	<b>DUAL FLIGHT TRAINING</b>
1	9.0	13.0
2	11.5	11.0
3	9.5	11.0
<b>TOTAL</b>	<b>30.0</b>	<b>35.0</b>

The *Jeppesen Instrument/Commercial Syllabus* provides for use of the Motus 6 Series FTD for up to a maximum of 50 percent of the flight training hour requirement for the Instrument – Airplane rating. The Elite PI-135 FTD may be used for up to 40 percent of the flight training hour requirement that ordinarily would be acquired in an airplane.

**COMPLETION STANDARDS**

You must complete, or receive credit for, all of the ground and flight lessons in Stages 1, 2, and 3 of the *Jeppesen Instrument/Commercial Syllabus* to graduate from the Instrument Rating – Airplane training course.

You must demonstrate through knowledge tests, flight tests, and show through appropriate records that you meet the knowledge, skill, and experience requirements described in Appendix C of FAR 141 necessary to obtain the FAA Instrument – Airplane rating.

When you complete the syllabus and meet the minimum requirements of FAR 141, you will be considered eligible for graduation and will be issued a graduation certificate for the Wings of Eagles Instrument Rating – Airplane training course. Upon graduation, you may apply to take the FAA practical examination from an independent FAA-designated pilot examiner.

Your satisfactory completion of this course consists of successfully passing the FAA practical test and receiving the Instrument – Airplane rating.

# Commercial Pilot Certification Training Course

The Commercial Pilot Certification training course is an advanced course of training intended to provide you with the ground instruction and flight training required to obtain the knowledge, skill, and aeronautical experience necessary to meet the requirements for issuance of an FAA commercial pilot certificate with the appropriate category and class ratings.

## ENROLLMENT

Prior to enrollment in the flight portion of the Commercial Pilot Certification course, you must hold at least a private pilot certificate and either

- Hold an instrument airplane rating, or
- Be concurrently enrolled in an instrument airplane rating course and pass the required instrument rating practical test prior to completing the commercial pilot certification course.

## SPECIAL ENROLLMENT REQUIREMENTS FOR VA BENEFICIARIES

VA regulations require that in order to receive benefits for the Commercial Pilot Certification training course, a VA beneficiary must hold an FAA private pilot certificate and have a current medical certificate valid for second class privileges **prior to enrollment** in this course.

VA beneficiaries enrolled in the Commercial Pilot Certification training course and receiving federal assistance benefits under Title 38 USC are required by VA to complete a minimum of eighteen hours of ground instruction, pre- and post-flight briefings, or flight training per quarter to continue to be certified for VA benefits.

## CURRICULUM

The complete *Jeppesen Instrument/Commercial Syllabus* combines instruction for the instrument airplane rating and commercial pilot certificate.

The Commercial Pilot Certification course is presented in the second segment of the *Jeppesen Instrument/Commercial Syllabus* and follows the curriculum outlined in Appendix D of FAR 141. The course consists of a minimum of 35 hours of ground instruction and 120 hours of flight training in Stages 4, 5, and 6.

## **COURSE SUMMARY**

### **Ground Instruction**

The ground instruction curriculum is divided into two stages and contains a total of 19 ground lessons.

During the ground instruction in Stage 4, you will review airports, airspace, flight information, and meteorology, as well as airplane performance, VFR cross-country planning, and navigation. In addition, you will gain a greater understanding of aviation physiology, aeronautical decision making, and the Federal Aviation Regulations applicable to commercial pilot operations.

In Stage 5, you will learn the operation of complex aircraft systems, how to predict aircraft performance, and advanced aerodynamics appropriate to complex airplanes. You also will learn about aeronautical decision making appropriate to commercial operations and how to perform the flight maneuvers required for commercial pilot certification.

At the completion of Stage 5, you will take the actual FAA Commercial Pilot – Airplane Airman Knowledge Test.

### **Flight Training**

The flight training curriculum is divided into three stages and contains a total of 58 flight lessons.

The objective of Stage 4 flight training is to broaden your knowledge of VFR cross-country and night operations and to provide the skill necessary to operate safely in the night environment and during extended cross-country flights.

Flight training in Stages 5 and 6 provides instruction and practice in complex aircraft. The stage objectives are to broaden your knowledge and provide the skill necessary to safely fly a complex airplane similar to those frequently used in commercial operations. Additionally, commercial flight maneuvers are introduced and practiced to proficiency. At the completion of Stage 6, you will take the FAA Commercial Pilot practical test.

## **FLIGHT TIME SUMMARY**

Times shown on the flight time summary are for guidance only in achieving compliance with the FAA minimums specified in FAR 141. Ultimately, you must show compliance with the minimum requirements of FAR 141 by meeting the minimum experience requirements and demonstrating satisfactory aeronautical knowledge and flight proficiency through stage checks and end-of-course tests.

**Wings of Eagles Jeppesen Guided Flight Discovery  
Commercial Pilot Certification Course**

<b>STAGE</b>	<b>GROUND INSTRUCTION</b>	<b>DUAL FLIGHT TRAINING</b>	<b>SOLO FLIGHT</b>	<b>COMBINED DUAL/SOLO TOTALS</b>
4	10.0	13.0	40.0	53.0
5	25.0	20.0	9.0	29.0
6		22.0	16.0	38.0
<b>TOTALS</b>	<b>35.0</b>	<b>55.0</b>	<b>65.0</b>	<b>120.0</b>

The *Jeppesen Instrument/Commercial Syllabus* provides for use of the Motus 6 Series FTD for up to a maximum of 30 percent of the flight training hour requirement for Commercial Pilot certification. The Elite PI-135 FTD may be used for up to 20 percent of the flight training hour requirement for Commercial Pilot certification that ordinarily would be acquired in an airplane.

**COURSE COMPLETION STANDARDS**

You must complete, or receive credit for, all of the ground and flight lessons in Stages 4, 5, and 6 of the *Jeppesen Instrument/Commercial Syllabus* to graduate from the Commercial Pilot Certification training course.

You must demonstrate through knowledge tests, flight tests, and show through appropriate records that you meet the knowledge, skill, and experience requirements described in Appendix D of FAR 141 necessary to obtain the FAA commercial pilot certificate with the appropriate category and class rating.

When you complete the syllabus and meet the minimum requirements of FAR 141, you will be considered eligible for graduation and will be issued a graduation certificate for the Wings of Eagles Commercial Pilot Certification training course. Upon graduation, you may apply to take the FAA practical examination from an independent FAA-designated pilot examiner.

Your satisfactory completion of this course consists of successfully passing the FAA practical test and receiving the FAA commercial pilot certificate.

# Flight Instructor Certification Course

This course is an advanced training course intended to provide you with the ground instruction and flight training required to obtain the knowledge, skill, and aeronautical experience necessary to meet the requirements for issuance of an FAA Flight Instructor Certificate with airplane category and single-engine land class ratings.

## ENROLLMENT

Prior to enrollment in the flight portion of the Flight Instructor Certification course, you must hold at least a commercial or airline transport pilot certificate with an airplane category and single-engine land class rating, and an instrument airplane rating or privilege.

## SPECIAL ENROLLMENT REQUIREMENTS FOR VA BENEFICIARIES

VA regulations require that in order to receive benefits for the Flight Instructor Certification training course, a VA beneficiary must hold an FAA commercial pilot certificate and have a current medical certificate valid for second class privileges **prior to enrollment** in this course.

VA beneficiaries enrolled in the Flight Instructor Certification training course and receiving federal assistance benefits under Title 38 USC are required by VA to complete a minimum of fifteen hours of ground instruction, pre- and post-flight briefings, or flight training per quarter to continue to be certified for VA benefits.

## CURRICULUM

The complete *Jeppesen Flight Instructor Syllabus* combines instruction for the initial Flight Instructor and Instrument Flight Instructor certificates.

The Flight Instructor Certification course is presented in the first segment of the *Jeppesen Flight Instructor Syllabus* and follows the curriculum outlined in Appendix F of FAR 141, and consists of a minimum of 40 hours of ground instruction and 30 hours of flight training.

## COURSE SUMMARY

### Ground Stage Descriptions

The ground instruction curriculum is divided into two stages and contains a total of 27 lessons.

In Stage 1, you will become familiar with learning theories, styles, and domains of learning. You will learn about the teaching process, teaching methods, lesson plans, communication techniques, evaluation of student performance, and human factors.

During Stage 2, you will begin to apply the principles of planning and organizing ground and flight training lessons. In addition, you will obtain the instructional knowledge required to

teach private and commercial pilot students, including recognition, analysis, and correction of common student errors.

At the completion of ground instruction, you will take the actual FAA Fundamentals of Instruction and FAA Flight Instructor Airman Knowledge Tests.

### **Flight Stage Descriptions**

The flight training curriculum also is divided into two stages and contains a total of 17 flight lessons.

During Stage 1, you will learn the analysis and performance of all of the maneuvers required for private and commercial pilot certification from the right seat of the training airplane. Appropriate maneuvers and procedures will be practiced using visual and instrument references, as indicated in the lesson content.

During Stage 2, you will acquire the instructional knowledge of the elements of each of the listed maneuvers and procedures, including the recognition, analysis, and correction of common student errors. You will be able to prepare a lesson plan for each flight and will be able to safely conduct the flight according to the planned lesson, including effective preflight and postflight instruction.

Throughout the course, you will practice proper single-pilot resource management (SRM) techniques, exhibit positive exchange of aircraft control procedures, and display sound aeronautical decision making skills.

### **FLIGHT TIME SUMMARY**

Times shown on the flight time summary are for guidance only in achieving compliance with the FAA minimums specified in FAR 141. Ultimately, you must show compliance with the minimum requirements of FAR 141 by meeting the minimum experience requirements and demonstrating satisfactory aeronautical knowledge and flight proficiency through stage checks and end-of-course tests.

All flight training in the Flight Instructor Certification training course is dual instruction.

#### **Wings of Eagles Jeppesen Guided Flight Discovery Flight Instructor Certification Course**

<b>STAGE</b>	<b>GROUND INSTRUCTION</b>	<b>DUAL FLIGHT TRAINING</b>
1	14.5	13.5
2	25.5	16.5
<b>TOTAL</b>	<b>40.0</b>	<b>30.0</b>

FAR 141 Appendix F provides for use of the Motus 6 Series FTD for up to a maximum of 10 percent of the flight training hour requirement for Flight Instructor certification. The Elite PI-135 FTD may be used for up to 5 percent of the flight training hour requirement for Flight Instructor certification that ordinarily would be acquired in an airplane.

### **COURSE COMPLETION STANDARDS**

You must complete, or receive credit for, all of the ground and flight lessons in Stages 1 and 2 of the *Jeppesen Flight Instructor Syllabus* to graduate from the Flight Instructor Certification training course.

You will demonstrate through knowledge tests, flight tests, and show through appropriate records that you meet the knowledge, skill, and experience requirements necessary to obtain the Flight Instructor Certificate with airplane category and single-engine land class ratings.

When you complete the syllabus and meet the minimum requirements of FAR 141, you will be considered eligible for graduation and will be issued a graduation certificate for the Wings of Eagles Flight Instructor Certification Course. Upon graduation, you may apply to take the FAA practical examination from an independent FAA-designated pilot examiner.

Your satisfactory completion of a course consists of successfully passing the FAA practical test and receiving the Flight Instructor certificate.

# Flight Instructor Instrument Certification Course

This course is an advanced course intended to provide you with the ground instruction and flight training required to obtain the knowledge, skill, and aeronautical experience necessary to meet the requirements for issuance of an FAA Flight Instructor Instrument Certificate with an Airplane category rating.

## ENROLLMENT

Prior to enrollment in the flight portion of the Flight Instructor Instrument Certification course, you must hold at least a commercial or airline transport pilot certificate with an airplane category and single-engine land class rating, and an instrument airplane rating or privilege.

## SPECIAL ENROLLMENT REQUIREMENTS FOR VA BENEFICIARIES

VA regulations require that in order to receive benefits for the Flight Instructor Instrument Certification training course, a VA beneficiary must hold an FAA commercial pilot certificate and have a current medical certificate valid for second class privileges **prior to enrollment** in this course.

VA beneficiaries enrolled in the Flight Instructor Instrument Certification training course and receiving federal assistance benefits under Title 38 USC are required by VA to complete a minimum of fifteen hours of ground instruction, pre- and post-flight briefings or flight training per quarter to continue to be certified for VA benefits.

## CURRICULUM

The complete *Jeppesen Flight Instructor Syllabus* combines instruction for the initial Flight Instructor and Instrument Flight Instructor certificates.

The Instrument Flight Instructor Certification course is presented in the second segment of the *Jeppesen Flight Instructor Syllabus* and follows the curriculum outlined in Appendix G of FAR 141, and consists of a minimum of 15 hours of ground instruction and 20 hours of flight training.

## COURSE SUMMARY

### Ground Stage Descriptions

The ground instruction curriculum is divided into two stages and contains a total of 12 ground lessons.

During Stage 3, you will review the principles of attitude instrument flying, ATC procedures, and IFR navigational charts. You will obtain the instructional knowledge required to teach these subjects, including the recognition, analysis, and correction of common student errors.

During Stage 4, you will review arrival procedures, instrument approach procedures, and IFR flight planning. You will acquire the instructional knowledge required to teach these subjects including the recognition, analysis, and correction of common student errors.

Following the completion of ground instruction, you will take the actual FAA Flight Instructor – Instrument Airman Knowledge Test.

### **Flight Stage Descriptions**

The flight training curriculum also is divided into two stages and contains a total of 13 flight lessons.

During Stage 3, you will learn the analysis and performance of the maneuvers and procedures required for an Instrument – Airplane rating from the right seat of the training airplane, including appropriate safety of flight practices.

During Stage 4 of instruction, you will acquire the instructional knowledge of the elements of each of the listed maneuvers and procedures, including the recognition, analysis, and correction of common student errors. You will be able to prepare a lesson plan for each flight and will be able to safely conduct the flight according to the planned lesson, including effective preflight and postflight instruction.

### **FLIGHT TIME SUMMARY**

Times shown on the flight time summary are for guidance only in achieving compliance with the FAA minimums specified in FAR 141. Ultimately, you must show compliance with the minimum requirements of FAR 141 by meeting the minimum experience requirements and demonstrating satisfactory aeronautical knowledge and flight proficiency through stage checks and end-of-course tests.

All flight training in the Instrument Flight Instructor Certification course is dual instruction.

#### **Wings of Eagles Jeppesen Guided Flight Discovery Flight Instructor Instrument Certification Course - Airplane**

<b>STAGE</b>	<b>GROUND INSTRUCTION</b>	<b>DUAL FLIGHT TRAINING</b>
3	6.5	8.0
4	8.5	12.0
<b>TOTAL</b>	<b>15.0</b>	<b>20.0</b>

FAR 141 Appendix G provides for use of the Motus 6 Series FTD for up to a maximum of 10 percent of the flight training hour requirement for Flight Instructor certification. The Elite PI-135 FTD may be used for up to 5 percent of the flight training hour requirement for Flight Instructor certification that ordinarily would be acquired in an airplane.

### **COURSE COMPLETION STANDARDS**

You must successfully complete all of the ground instruction and flight training lessons contained in Stages 3 and 4 of the *Jeppesen Flight Instructor Syllabus* to graduate from the Flight Instructor Instrument Certification training course.

You must demonstrate through knowledge tests, flight tests, and show through appropriate records that you meet the knowledge, skill, and experience requirements necessary to obtain the Flight Instructor Instrument Certificate with an Airplane category rating.

When you complete the syllabus and meet the minimum requirements of FAR 141, you will be considered eligible for graduation and will be issued a graduation certificate for the Wings of Eagles Flight Instructor Instrument Certification training course. Upon graduation, you may apply to take the FAA practical examination from an independent FAA-designated pilot examiner.

Your satisfactory completion of this course consists of successfully passing the FAA practical test and receiving the Flight Instructor Instrument certificate.

# Airline Transport Pilot Certification

This course is an advanced course intended to provide you with the ground instruction and flight training required to obtain the knowledge, skill, and aeronautical experience necessary to meet the requirements for issuance airline transport pilot certificate with an airplane category rating and a single-engine or multi-engine land class rating.

## ENROLLMENT

Prior to enrollment in the flight portion of the Airline Transport Pilot Certification course, you must

- Hold a commercial pilot certificate and an instrument airplane rating,
- Meet the appropriate aeronautical experience requirements in Subpart G of FAR 61,
- Meet the military experience requirements under FAR 617.73 to qualify for a commercial pilot certificate and an instrument rating, or
- Hold either a foreign Airline Transport Pilot license or foreign commercial pilot certificate and an instrument rating.

## SPECIAL ENROLLMENT REQUIREMENTS FOR VA BENEFICIARIES

VA regulations require that in order to receive benefits for the Airline Transport Pilot Certification training course, a VA beneficiary must hold an FAA commercial pilot certificate and have a current FAA First class medical certificate **prior to enrollment** in this course.

VA beneficiaries enrolled in the Airline Transport Pilot Certification training course and receiving federal assistance benefits under Title 38 USC are required by VA to complete a minimum of fifteen hours of ground instruction, pre- and post-flight briefings, or flight training per quarter to continue to be certified for VA benefits.

Additionally, you must already have accumulated the 1500 hours of flight time required for the airline transport pilot certificate to be eligible to enroll in the Wings of Eagles Airline Transport Pilot Certification training course.

## CURRICULUM

The Airline Transport Pilot Certification training course follows the curriculum outlined in Appendix E of FAR 141, and consists of a minimum of 64.5 hours of ground instruction and 26 hours of flight training. The training course is taught utilizing the Wings of Eagles Airline Transport Pilot Certification flight training course and ground instruction course syllabi, which have been specifically developed to meet the requirements of FAR 141.

## **COURSE SUMMARY**

### **Ground Stage Descriptions**

The ground instruction curriculum is divided into two stages and contains a total of 13 ground lessons.

In the first stage, you will become familiar with the FAA and NTSB regulations applicable to Airline Transport Pilot operations under FAR Part 121 and 135. You also will study aviation weather theory, analyze weather information, conditions, and trends while on the ground and in flight, and learn how to apply that information to the operational decisions required in air taxi and airline operations. You will review air traffic control procedures in the departure, enroute, arrival, and approach phases of flight, and other operations in the National Airspace System. Each Stage 1 ground lesson is followed by a lesson test. At the conclusion of Stage 1, you will take a mid-course knowledge exam.

In Stage 2 of ground instruction, you will study advanced aerodynamics, how to calculate weight and balance, and how to predict aircraft performance appropriate to complex airplanes. You also will learn about human factors and aeronautical decision making appropriate to airline and air taxi operations, including crew resource and workload management, situational awareness, and responsibilities of a pilot-in-command. Each ground lesson in Stage 2 is followed by a lesson test.

Following the completion of ground instruction, you will take the actual FAA Airline Transport Pilot Airman Knowledge Test.

### **Flight Stage Descriptions**

The flight training curriculum contains a total of eight flight lessons.

During flight training, you will become familiar with the training aircraft, and practice the aircraft and power configurations necessary to perform the maneuvers required for the practical test. You will practice recovery from unusual attitudes, abnormal and emergency situations. You will study aircraft performance and participate in scenarios designed to explore aircraft performance in adverse weather situations. Cross-country operations in the National Airspace System, including departure, enroute, and arrival procedures, as well as instrument approaches also will be practiced.

## **FLIGHT TIME SUMMARY**

Times shown on the flight time summary are for guidance only in achieving compliance with the FAA minimums specified in the approved Wings of Eagles Airline Transport Pilot training course syllabi. Ultimately, you must show compliance with the minimum requirements of FAR 141 by meeting the minimum experience requirements and demonstrating satisfactory aeronautical knowledge and flight proficiency through stage checks and end-of-course tests.

All flight training in the Airline Transport Pilot Certification training course is dual instruction.

**Wings of Eagles  
Airline Transport Pilot Certification Course**

<b>STAGE</b>	<b>GROUND INSTRUCTION</b>	<b>DUAL FLIGHT TRAINING</b>
1	44.5	26.0
2	20.0	0.0
<b>TOTAL</b>	<b>64.5</b>	<b>26.0</b>

FAR 141 Appendix E provides for use of the Motus 6 Series FTD for up to a maximum of 12.5 hours of the flight training hour requirement for Airline Transport Pilot certification. The Elite PI-135 FTD may be used for up to six hours of the flight training hour requirement for Flight Instructor certification that ordinarily would be acquired in an airplane.

**COURSE COMPLETION STANDARDS**

You must successfully complete, or receive credit for, all of the ground instruction and flight training lessons contained in the Wings of Eagles Airline Transport Pilot Certification flight training course and ground instruction course syllabi to graduate from the Airline Transport Pilot Certification training course.

You must demonstrate through knowledge tests, flight tests, and show through appropriate records that you meet the knowledge, skill, and experience requirements necessary to obtain the airline transport pilot certificate with the appropriate category and class ratings.

When you complete the syllabi and meet the minimum requirements of FAR 141, you will be considered eligible for graduation and will be issued a graduation certificate for the Wings of Eagles Airline Transport Pilot Certification training course. Upon graduation, you may apply to take the FAA practical examination from an independent FAA-designated pilot examiner.

Your satisfactory completion of a course consists of successfully passing the FAA practical test and receiving the Airline Transport Pilot certificate.

# Training Courses Cost Addendum

## GENERAL

This Training Cost Addendum is effective as of 11/6/2009.

Information in this addendum such as available aircraft, aircraft rental rates, and instructor rates may be revised periodically.

## COST ESTIMATES

Total training course costs vary with the aircraft utilized for training, frequency of flight training, your previous flight experience, study habits, and performance through the training course syllabus.

The following tables provide the **maximum** total cost to complete each Wings of Eagles training course based upon the **minimum** FAR 141 time requirements shown above and utilizing the most expensive training aircraft in the Wings of Eagles training fleet authorized for the training course. You may select for training other Wings of Eagles training aircraft that are less expensive.

Maximum instructor rates currently are \$55 per hour for ground instruction and flight training in all training aircraft and simulators except the Cirrus SR22 aircraft. The maximum instructor rate for ground instruction and flight training in Cirrus SR22 aircraft currently is \$82 per hour.

## TUITION AND FEES

Fees are based on the hourly usage of aircraft, simulators, and instructors. A current rate sheet for Wings of Eagles LLC resources will be provided at the time of enrollment.

**Fees for ground instruction and flight training are billed as they are incurred and payment is required at the time services are rendered. Normally, no advance payment is expected or required. Payment may be made by cash, check, or credit card.**

## REFUNDS

**No refund of fees paid for the hourly usage of aircraft, simulators, and instructors will be made once those services have been rendered.**

**However, if you have deposited funds with Wings of Eagles for training in advance of that training and you terminate training at any time and for any reason while unused funds remain on deposit, you shall receive a refund of 100% of those funds remaining at the time of termination. There are no program fees, penalties, or early termination fees.**

## AUTHORIZED AIRCRAFT AND HOURLY RATES

Wings of Eagles aircraft are available for the training courses as indicated in the following table.

LOCATION	MAKE	MODEL	HP	DUAL RATE	SOLO RATE	AUTHORIZED TRAINING COURSES				
						IRA	CPA	CFI	CFII	ATP
JWN, MQY	Cessna	C152	100	\$ 144	\$ 89	X	X	X	X	X
JWN	Cessna	C172L	180	176	121	X	X	X	X	X
JWN	Cessna	C172N	180	176	121	X	X	X	X	X
JWN	Cessna	C172SP	180	190	135	X	X	X	X	X
JWN	Cessna	C172SP G1000	180	206	151	X	X	X	X	X
JWN	Cessna	C177RG	200	207	152	X	X	X	X	X
JWN	Cirrus	SR22	310	352	270	X	X	X	X	X
MQY	Diamond	DA20	125	192	137		X	X	X	X
JWN, MQY	Diamond	DA40	180	198	143	X	X	X	X	X
JWN, MQY	Diamond	DA40 G1000	180	236	181	X	X	X	X	X
MQY	Piper	PA28R-200	200	214	159	X	X	X	X	X
JWN	Raytheon	BE55	360	363	308	X	X		X	X
JWN	FTD	Elite PI-135	NA	82	NA	X	X	X	X	X
MQY	FTD	Motus Series 6	NA	165	NA	X	X	X	X	X

**NOTE:** Shaded cells indicate cost used for computing maximum costs of applicable training course.

## SPECIAL FINANCIAL INFORMATION FOR VA BENEFICIARIES

The policies regarding tuition, fees, and refunds applied to VA beneficiaries are the same for all students of Wings of Eagles LLC and are described in the *Tuition and Fees* and *Refunds* sections above.

VA will reimburse up to 60% of the actual authorized charges for ground instruction and flight training.

The maximum VA reimbursement amount for a training course is calculated by multiplying the cost per hour by the number of hours of ground instruction required by the applicable syllabus, the number of hours of dual and solo flight training specified by the syllabus by the cost per hour of the most expensive aircraft authorized for the course, and adding the results together. Other less expensive aircraft may be used and charges will be incurred and certified to the VA at the hourly rate applicable for the aircraft used.

VA also will reimburse 60% of the Designated Pilot Examiner's testing fee and the testing fee for the applicable Airman Knowledge Test under the VA Licensing and Certification Benefit program.

Additional textbooks and course materials, plotters, computers, headsets, kneeboards and charts are considered personal equipment and are not reimbursable costs. Cost of personal items will vary based upon personal selection.

VA reimbursements for allowed training expenses are made directly to beneficiaries following the delivery of those services and periodic submission of documentation in accordance with VA regulations of the delivery of those services by Wings of Eagles LLC. Consequently, a delay of

60-90 days or more between delivery of training and receipt by the beneficiary of reimbursements from VA should be expected. Wings of Eagles LLC does not receive payment of reimbursements from VA.

## INSTRUMENT RATING – AIRPLANE COURSE

The following table provides your **estimated** maximum total cost to complete the Wings of Eagles Instrument Rating – Airplane training course.

<b>Description</b>	<b>Cost</b>
35 Hours of Dual Flight Training	\$ 12705
30 Hours of Ground Instruction	2460
Designated Examiner Fee for Practical Test*	350
Testing Center Fee for Knowledge Test*	70
<i>Rental of Aircraft for Practical Test</i>	<i>1090</i>
<i>Jeppesen 141 Instrument/Commercial Kit</i>	<i>300</i>
<i>Flight Publications</i>	<i>25</i>
<b>YOUR ESTIMATED TOTAL COST</b>	<b>\$ 17000</b>

### Information for VA Beneficiaries

Italicized line items in the above table indicate costs not eligible for reimbursement to VA beneficiaries. Practical and knowledge test costs annotated above with asterisks are reimbursable under the separate VA Licensing and Certification Benefit program.

Cost After 60% Maximum VA Reimbursement	\$ 6234
Non-Reimbursable Costs	1415
<b>VA BENEFICIARY ESTIMATED TOTAL COST</b>	<b>\$ 7649</b>

## COMMERCIAL PILOT CERTIFICATION COURSE

The following table provides your **estimated** maximum total cost to complete the Wings of Eagles Commercial Pilot Certification training course.

<b>Description</b>	<b>Cost</b>
70 Hours of Dual Flight Training	\$ 25410
65 Hours of Solo Flight Training	20020
49 Hours of Ground Instruction	4018
Designated Examiner Fee for Practical Test*	350
Testing Center Fee for Knowledge Test*	70
<i>Rental of Aircraft for Practical Test</i>	<i>2180</i>
<i>Medical Certificate</i>	<i>100</i>
<i>Jeppesen 141 Instrument/Commercial Kit</i>	<i>440</i>
<i>Flight Publications</i>	<i>25</i>
<b>YOUR ESTIMATED TOTAL COST</b>	<b>\$ 52613</b>

### Information for VA Beneficiaries

Italicized line items in the above table indicate costs not eligible for reimbursement to VA beneficiaries. Practical and knowledge test costs annotated above with asterisks are reimbursable under the separate VA Licensing and Certification Benefit program.

<b>Description</b>	<b>Cost</b>
Cost After 60% Maximum VA Reimbursement	\$ 19948
Non-Reimbursable Costs	2745
<b>VA BENEFICIARY ESTIMATED TOTAL COST</b>	<b>\$ 22693</b>

## FLIGHT INSTRUCTOR CERTIFICATION COURSE

The following table provides your **estimated** maximum total cost to complete the Wings of Eagles Flight Instructor Certification training course.

<b>Description</b>	<b>Cost</b>
30 Hours of Dual Flight Training	\$ 10560
40 Hours of Ground Instruction	3280
Designated Examiner Fee for Practical Test*	350
Testing Center Fee for Knowledge Tests*	140
<i>Rental of Aircraft for Practical Test</i>	<i>1056</i>
<i>Jeppesen Deluxe 141 Flight Instructor Kit</i>	<i>320</i>
<i>Flight Publications</i>	<i>25</i>
<b>YOUR ESTIMATED TOTAL COST</b>	<b>\$ 15731</b>

### Information for VA Beneficiaries

Italicized line items in the above table indicate costs not eligible for reimbursement to VA beneficiaries. Practical and knowledge test costs annotated above with asterisks are reimbursable under the separate VA Licensing and Certification Benefit program.

<b>Description</b>	<b>Cost</b>
Cost After 60% Maximum VA Reimbursement	\$ 5732
Non-Reimbursable Costs	1401
<b>VA BENEFICIARY ESTIMATED TOTAL COST</b>	<b>\$ 7133</b>

## FLIGHT INSTRUCTOR INSTRUMENT CERTIFICATION COURSE

The following table provides your **estimated** maximum total cost to complete the Wings of Eagles Flight Instructor Instrument Airplane training course.

<b>Description</b>	<b>Cost</b>
20 Hours of Dual Flight Training	\$ 7260
15 Hours of Ground Instruction	825
Designated Examiner Fee for Practical Test*	350
Testing Center Fee for Knowledge Test*	70
<i>Rental of Aircraft for Practical Test</i>	<i>1090</i>
<i>Jeppesen Deluxe 141 Flight Instructor Kit</i>	<i>320</i>
<i>Flight Publications</i>	<i>25</i>
<b>YOUR ESTIMATED TOTAL COST</b>	<b>\$ 9940</b>

### Information for VA Beneficiaries

Italicized line items in the above table indicate costs not eligible for reimbursement to VA beneficiaries. Practical and knowledge test costs annotated above with asterisks are reimbursable under the separate VA Licensing and Certification Benefit program.

<b>Description</b>	<b>Cost</b>
Cost After 60% Maximum VA Reimbursement	\$ 3402
Non-Reimbursable Costs	1435
<b>VA BENEFICIARY ESTIMATED TOTAL COST</b>	<b>\$ 4837</b>

## AIRLINE TRANSPORT PILOT CERTIFICATION COURSE

The following table provides your **estimated** maximum total cost to complete the Wings of Eagles Airline Transport Pilot Certification training course.

<b>Description</b>	<b>Cost</b>
26 Hours of Dual Flight Training	\$ 9438
64.5 Hours of Ground Instruction	3548
Designated Examiner Fee for Practical Test*	350
Testing Center Fee for Knowledge Test*	70
<i>Rental of Aircraft for Practical Test</i>	<i>\$ 1090</i>
<i>Books and Supplies</i>	<i>300</i>
<i>Flight Publications</i>	<i>25</i>
<b>YOUR ESTIMATED TOTAL COST</b>	<b>\$ 14821</b>

### Information for VA Beneficiaries

Italicized line items in the above table indicate costs not eligible for reimbursement to VA beneficiaries. Practical and knowledge test costs annotated above with asterisks are reimbursable under the separate VA Licensing and Certification Benefit program.

<b>Description</b>	<b>Cost</b>
Cost After 60% Maximum VA Reimbursement	\$ 5362
Non-Reimbursable Costs	1415
<b>VA BENEFICIARY ESTIMATED TOTAL COST</b>	<b>\$ 6777</b>

Intentionally Left Blank